

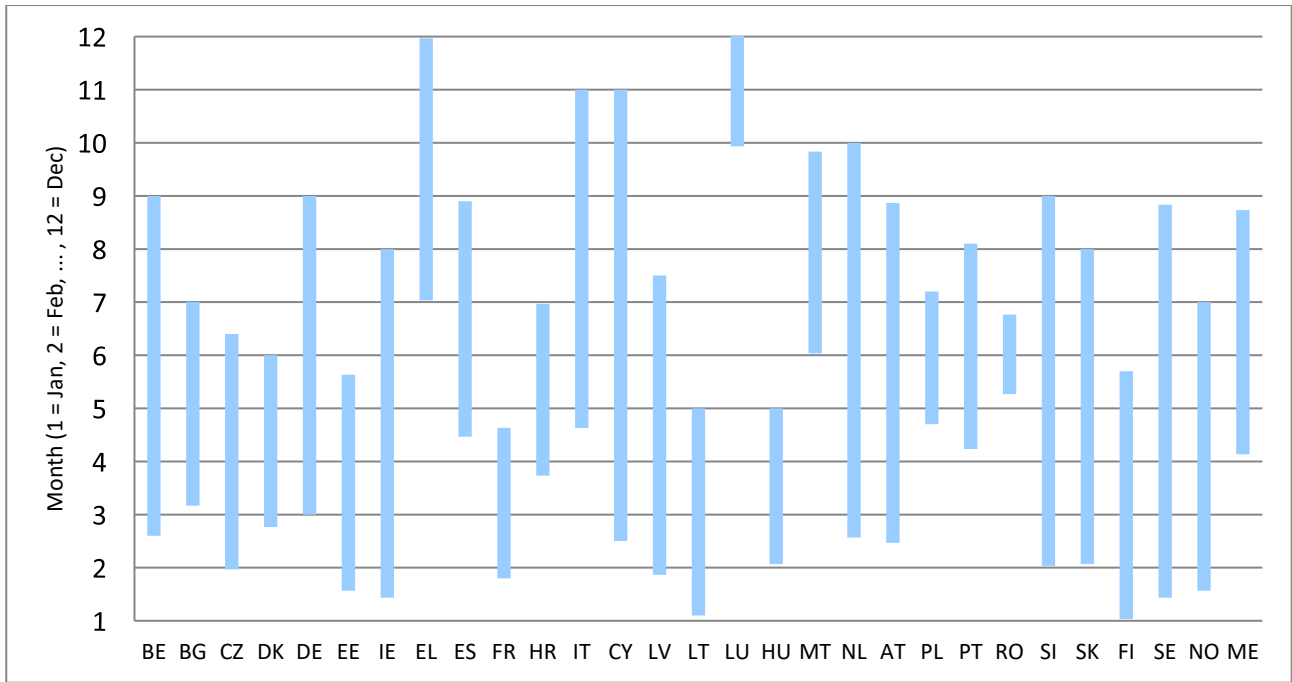
Annex 6: Fieldwork and mode of data collection

Table 1 – Mode of data collection by country, 2022 cross sectional data

Country	PAPI	CAPI	CATI	CAWI	other
BE		23.8	76.1		0.1
BG		100			
CZ	65.2	25.7	9.1		
DK			16	84	
DE	.	0.9	16.9	53.9	28.3
EE			84.1	15.9	
IE		97.8	2.2		
EL	62.6		37.3		0.1
ES		7.8	45.7	46.4	0.1
FR		68.8	31.2		
HR		42.3	56.6		1.1
IT		34.4	65.6		
CY		7.9	92.1		
LV		10.7	83.8	5.5	
LT	0.1	7.4	79.8	12.4	0.3
LU		8.3	5.6	86.1	
HU		45.2	45	9.8	
MT		0.5	99.5		
NL			22.3	77.7	
AT		49.2	41.1	9.6	
PL	2.8	28.4	68.9		
PT			100		
RO		100			
SI		36.8	63.2		
SK	94.3	5.7			
FI		0.4	89.2	10.4	
SE			44.5	55.5	
NO			100		
ME		100			

Source: EU-SILC Micro-database 2022 (October 2023)

Figure 1 – Fieldwork duration by country, 2022 cross sectional data



Source: EU-SILC Micro-database 2022 (October 2023)

Table 2 – Average interview duration, cross-sectional 2021-2022*

Countries	Country Code	2022	2021
Belgium	BE	54.6	27.8
Bulgaria	BG	69.5	69.8
Czechia	CZ	50.8	42.4
Denmark	DK	42.7	28.8
Germany	DE	113.6	94.1
Estonia	EE	68.9	51.4
Ireland	IE	51.0	39.9
Greece	EL	58.4	54.9
Spain	ES	45.1	34.8
France	FR	53.7	34.0
Croatia	HR	134.2	132.7
Italy	IT	31.4	39.4
Cyprus	CY	50.9	46.8
Latvia	LV	22.7	21.5
Lithuania	LT	52.3	48.5
Luxembourg	LU	95.9	38.3
Hungary	HU	71.4	211.1
Malta	MT	47.5	38.5
Netherlands	NL	23.0	16.0
Austria	AT	57.3	44.1
Poland	PL	83.3	81.1
Portugal	PT	34.7	50.8
Romania	RO	83.8	58.7
Slovenia	SI	39.7	24.3
Slovakia	SK	57.7	53.0
Finland	FI	41.1	26.7
Sweden	SE	15.4	22.9
Norway	NO	60.9	50.1
Montenegro	ME	24.2	26.6

Source: EU-SILC Micro-database (April 2023 (for 2021) and October 2023 (for 2022))

**The mean interview duration is measured in minutes. The mean interview duration per household is calculated as the sum of the duration of all household interviews plus the sum of the duration of all personal interviews, divided by the number of household questionnaires completed and accepted for the database.*